



IGEA  
in<sup>2</sup>GRUPA

---

# Geoportal Albanske agencije za prostorne podatke - ASIG

Hrvoje Matijević  
Marko Škvorc  
Dragan Podvezanec

# Projekt

- Agencija za prostorne podatke Albanije (ASIG)
- Lipanj 2016. - rujan 2017.
- Tirana, Zagreb, Varaždin
- Konzorcij IGEA, IN2 Zagreb, IN2 Tirana, MOG
- Zadatak
  - Implementirati Geoportal
  - Pomoći u pripremi podataka
  - Prenijeti znanje



# Osnove

- Open source tehnologije
- Desktop i mobilna verzija
- 2D i 3D GIS preglednik
- Sve sastavnice međusobno povezane
- Single sign-on
- Povezano sa sustavom naplate

IGEA  
in2GRUPA



# Geoportal

IGEA  
in2GRUPA

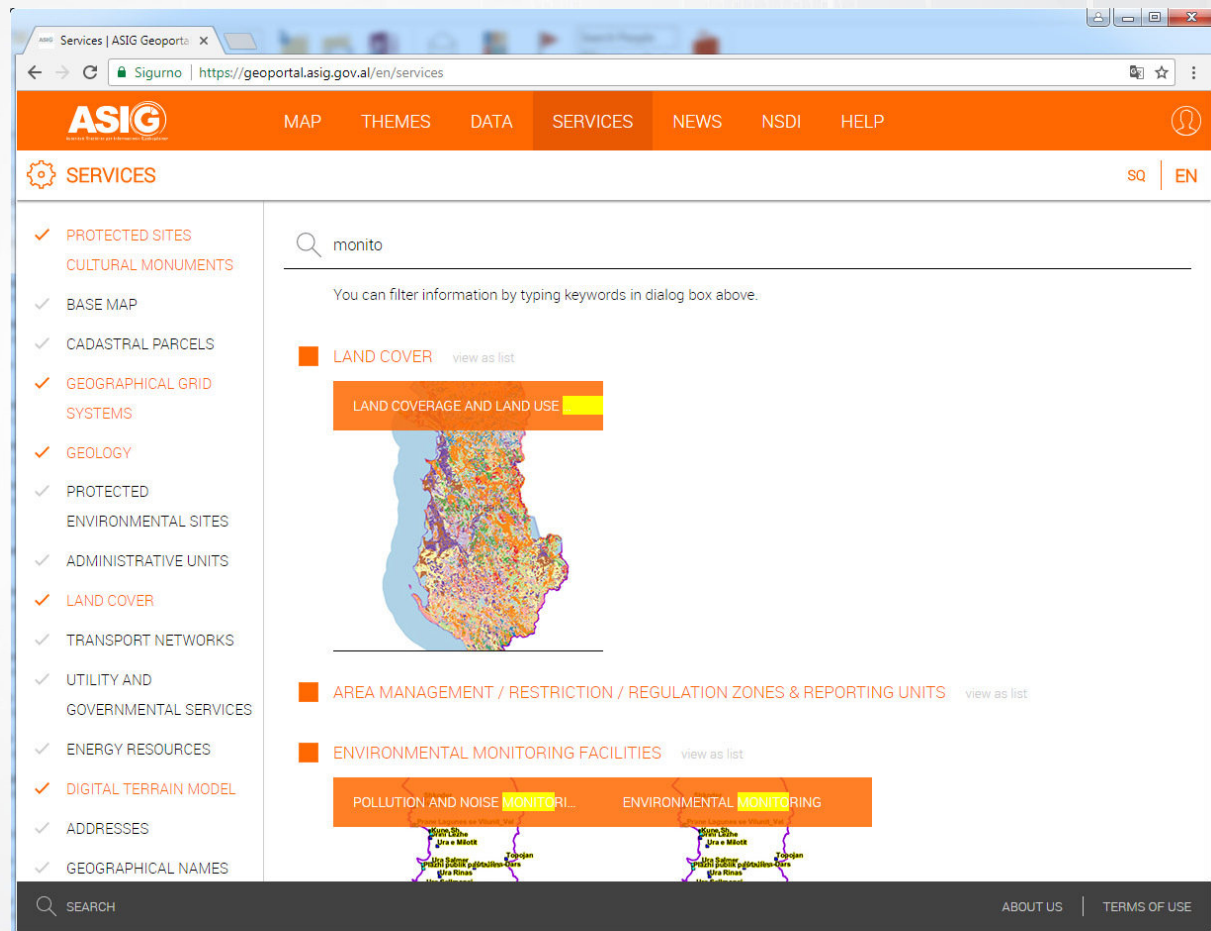
- CMS (Web stranice)
- Katalog metapodataka
- Cjeloviti GIS sustav
  - Baza podataka
  - GIS poslužitelj
  - Web preglednik





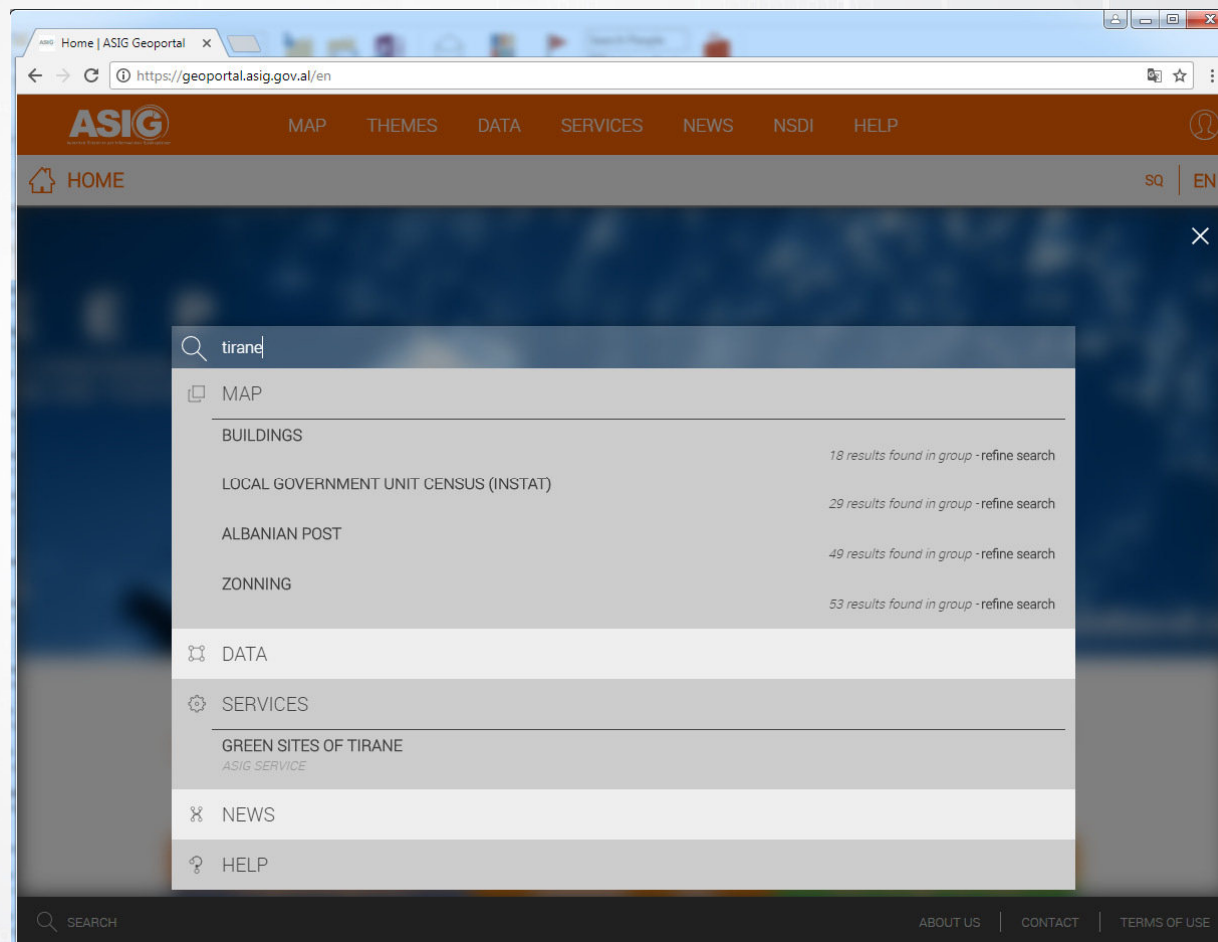
# Web stranice (CMS)

- Samostalno uređivanje stranica
- Povezan s
  - GIS
  - Katalog metapodataka
- Napredno pretraživanje CMS-a



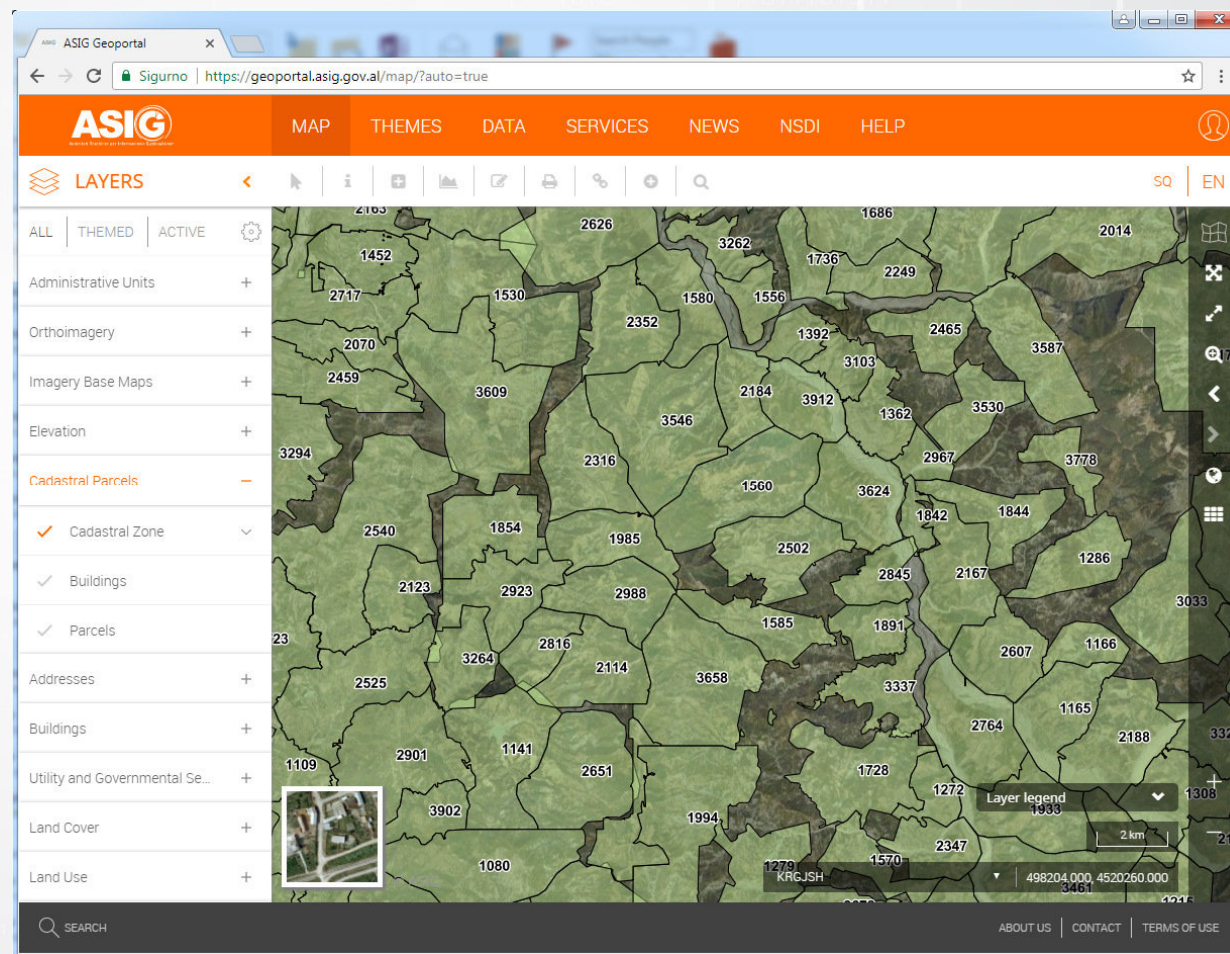
# Pretraživanje Geoportala iz CMS-a

- GIS preglednik
- Geonetwork
- CMS



# GIS – organizacija podataka

- Organizacija po temama
- Pratile se INSPIRE





# GIS - Pretraživanje

- Ciljano
  - Uobičajeno
- Slobodni tekst
  - Napredno
  - Konfigurabilno

The screenshot displays the ASIG Geoportal interface. The browser address bar shows the URL: <https://geoportal.asig.gov.al/map/?auto=true>. The main navigation bar includes links for MAP, THEMES, DATA, SERVICES, NEWS, NSDI, and HELP. Below this is a LAYERS section with various icons. The central map area shows a satellite view with green cadastral parcels overlaid, each labeled with a number (e.g., 3992, 8320, 3993, 8330, 8340, 8130, 8140, 8170, 8210, 8350, 8360, 8150, 8180, 3064, 8230, 8240, 8260, 3321, 3266, 3550). A search bar on the right contains the text '1/254'. Below the search bar, the search results are displayed in a table:

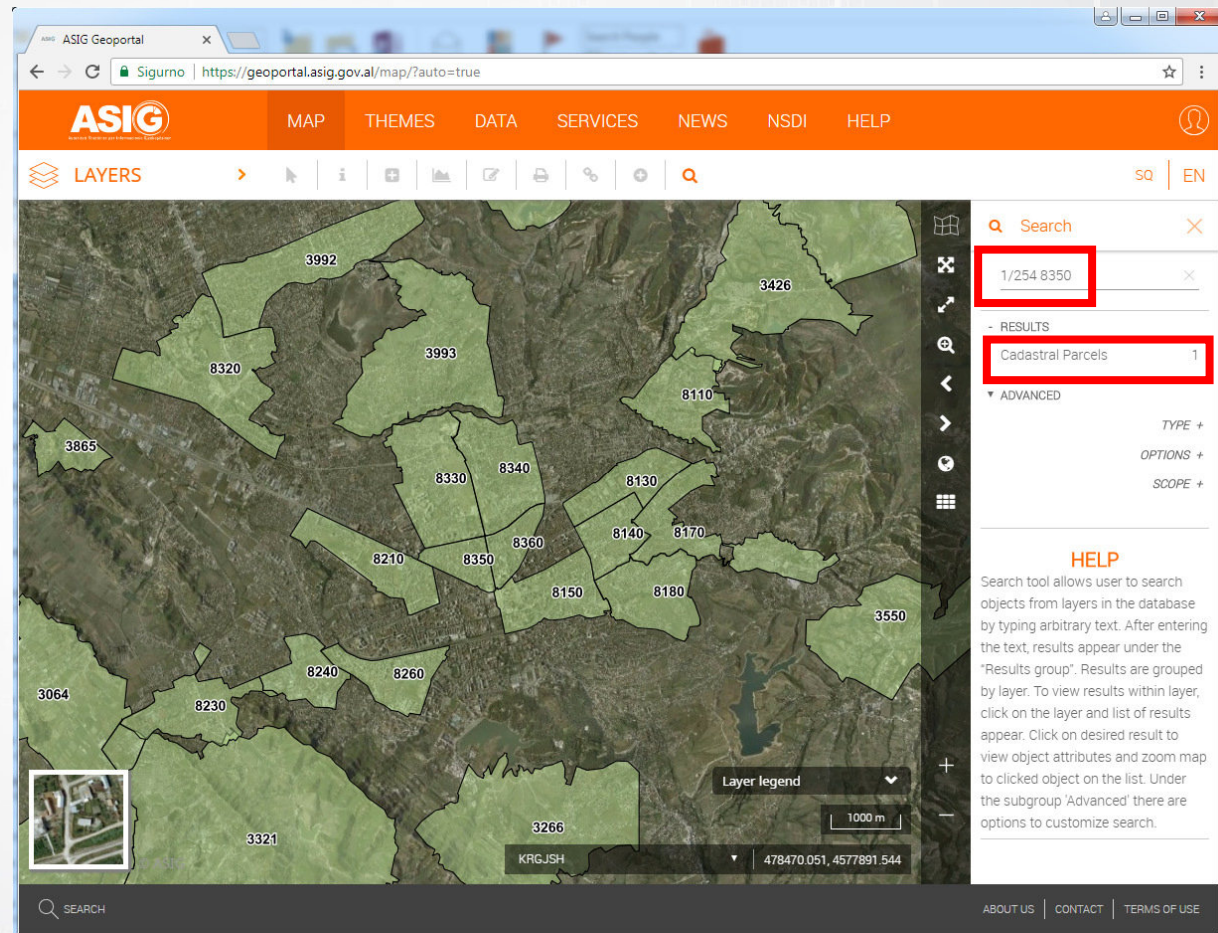
- RESULTS	
Buildings	16
Cadastral Parcels	34

Below the results table, there are expandable sections for 'ADVANCED' search options, including 'TYPE +', 'OPTIONS +', and 'SCOPE +'. A 'HELP' section at the bottom right explains the search tool's functionality. The bottom of the interface includes a search bar, a scale bar (1000 m), and a layer legend.



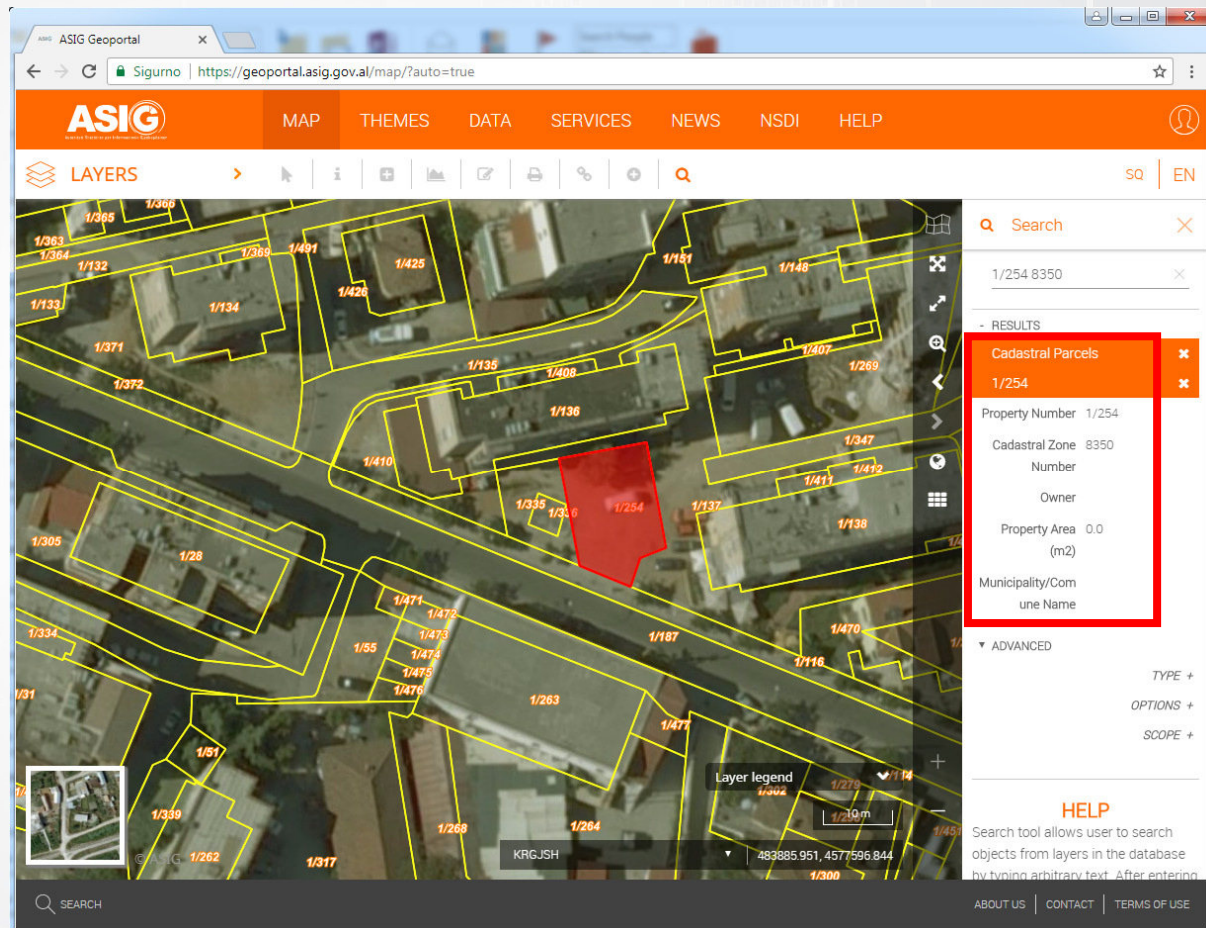
# GIS - Pretraživanje

- Ciljano
  - Uobičajeno
- Slobodni tekst
  - Napredno
  - Konfigurabilno



# GIS - Pretraživanje

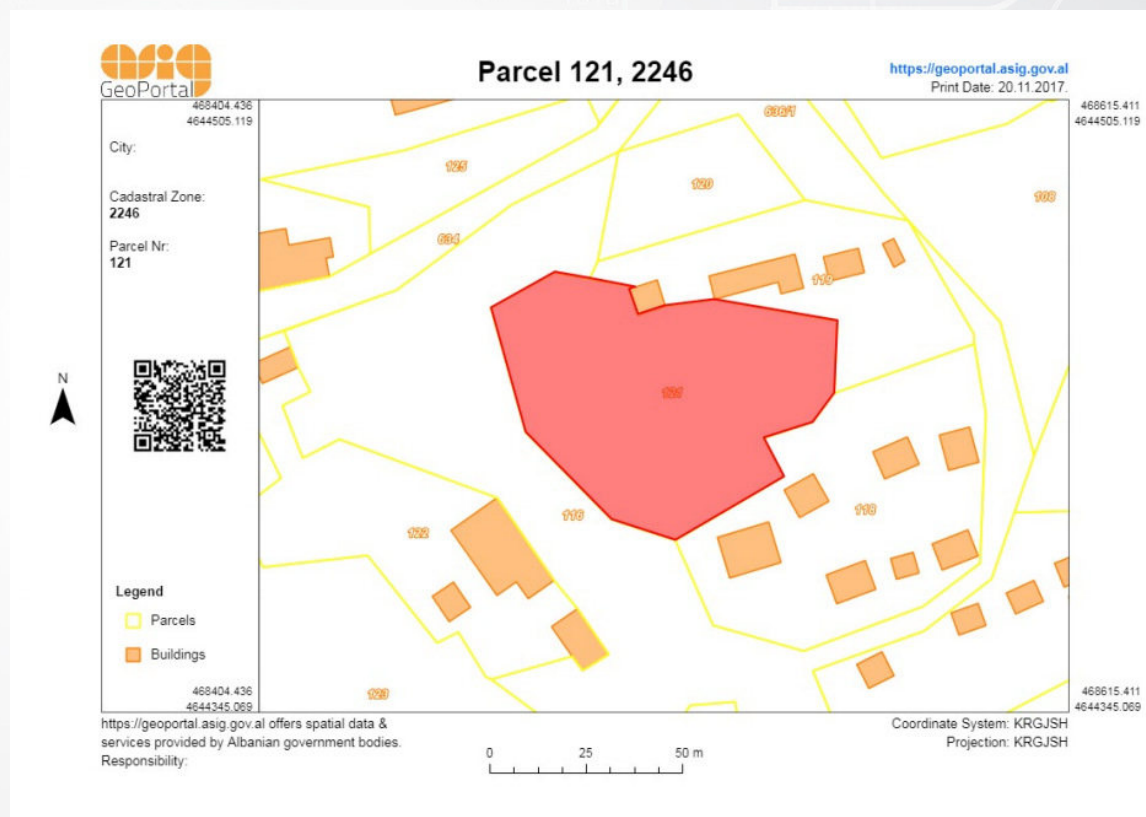
- Ciljano
  - Uobičajeno
- Slobodni tekst
  - Napredno
  - Konfigurabilno





# Izvještaj o čestici

- QR kod za vezu s pravnim podacima





# Upravljanje uslugama

- Samostalno definiranje objektnih klasa
  - WFS
  - WMS
  - WMTS
- Prava pristupa
  - Korisnik-uloga-usluga-atribut
- ATOM
  - Samostalno generiranje feedova

Data rules / Edit data rule 1989385

Id	1989385
Role	aku
Feature class	Orthophoto 2007
Grant type	Allow
Rule type	Service security
Service type	WMS
Priority	5

Submit changes Cancel changes

# Naplata podataka

- Definiranje cijene
  - Vektor - po broju objekata
  - Vektor - po osobinama objekta (duljina ili površina)
  - Raster - po površini i rezoluciji

Payments / Feature class 3323661 sq | EN

Object type\*  
 Feature class  
 Dataset entry

Feature class\*  
Buildings

Billing model\*  
Per feature  
Per feature  
Per length  
Per area  
Per resolution

Status\*

Show 10 entries

User group	Price	Valid from	Valid to	Range from	Range to	
Registered users	0	01.01.2017	0	0		Modify Remove

Showing 1 to 1 of 1 entries

Previous 1 Next

Submit changes Cancel changes +

# Monitoring

- INSPIRE usklađenost usluga
- Podatkovni promet
- Who is on



Services validation report

29/11/2017

URL: [https://geoportal.asig.gov.al/service/ministria\\_e\\_arsimit\\_dhe\\_sportit/wfs](https://geoportal.asig.gov.al/service/ministria_e_arsimit_dhe_sportit/wfs)

Average response time	0.18 s
Maximum response time	1.61 s
Minimum response time	0.11 s
Average response size	
Maximum response size	
Minimum response size	
Service availability	
Service validity	



ASIG Validation service

Following services are available:

- Summary report for selected period: [/rest/sum](#)
- List of failed tests for selected period: [/rest/fail](#)
- Manually executes validation: [/rest/validate](#)

## Who is on



3

Total active principals



3

Usage count sessions



3

Total SSO sessions



# Priprema podataka

- Rasteri
  - Digitalni ortofoto
    - Ortofoto 2007. – 0.2m
    - Ortofoto 2015. – 0.2m
    - Ortofoto urbanih područja 2015. – 0.08m
  - Topografske karte (1:10k,1:25k,1:50k,1:100k)
  - DMR – iz DEM-a kreirane .terrain datoteke za 3D preglednik
- Obradeno i pripremljeno >2TB rasterskih podataka
- Generirano >900GB cache-a za WMTS

## Za kraj

- Vrlo napredne funkcionalnosti
- Integracija različitih odvojenih sustava
- Autonomija korisnika kod održavanja

- Usklađenost s INSPIRE



Pogledajte i sami...

<https://geoportal.asig.gov.al/>

